

運動禁藥查詢工具



<https://www.globaldro.com/Home>

運動禁藥查詢系統APP



運動禁藥查詢系統APP

< 返回 西藥藥品 

綠油精 

綠油精

《禁用物質》
不含禁用物質

《許可證字號》
內衛成製字第001347號

《中文品名》
綠油精

《英文品名》
GREEN OIL

《劑型》
外用液劑

《主成分略述》
METHYL
SALICYLATE::MENTHOL::CAMPHOR::METHYL

禁用物質

No

Yes

< 返回 西藥藥品 

斯斯感冒膠囊 

斯斯感冒膠囊

《禁用物質》
METHYLEPHEDRINE

《禁用物質分類》
S6

《使用規範》
賽內之甲基麻黃素尿液中濃度若高於10 MCG/ML
則視為使用禁用物質

《許可證字號》
衛署藥製字第032026號

《中文品名》
斯斯感冒膠囊

《英文品名》
SUZULEX A CAPSULES

Tip 商品名要看仔細

Q: 請問下列藥物哪一個有運動禁藥?



1) 只有 A

2) 只有 B

3) A+B

4) 都不含運動禁藥

Tip 商品名要看仔細



1

西藥藥品

斯斯

以關鍵字“斯斯”搜尋一共 17 筆資料

- ◆ 斯斯感冒膠囊
- ◆ 斯斯鼻炎膠囊
- ◆ 斯斯保肝膠囊
- ◆ 斯斯治痛錠
- ◆ 斯斯咳嗽膠囊
- ◆ 斯斯解痛錠
- ◆ 斯斯止痛錠500毫克(乙醯胺酚)
- ◆ 斯斯爽喉液4.5公絲(普威隆碘)
- ◆ 斯斯解痛錠125毫克

2

3

西藥藥品

斯斯

斯斯鼻炎膠囊

《禁用物質》
PSEUDOEPHEDRINE

《禁用物質分類》
S6

《使用規範》
賽內之假麻黃鹼尿液中濃度若高於150 MCG/ML具
視為使用禁用物質

《許可證字號》

Tip 商品名要看仔細



1

西藥藥品

普拿疼伏冒鼻

以關鍵字“普拿疼伏冒鼻”搜尋 得到 2 筆資料

- ◆ 普拿疼伏冒鼻炎感冒錠
- ◆ 普拿疼伏冒鼻炎錠

2

3

西藥藥品

普拿疼伏冒鼻

普拿疼伏冒鼻炎錠

《禁用物質》
不含禁用物質

《許可證字號》
衛署藥輸字第025841號

《中文品名》
普拿疼伏冒鼻炎錠

《英文品名》
PANADOL ALLERGY SINUS CAPLETS

鼻炎感冒錠 ≠ 鼻炎錠

運動禁藥查詢系統APP

Tip

限台灣

上市之藥物



Global DRO

<https://www.globaldro.com/Home>



Athletes, check your medications!

CHOOSE YOUR SPORT NATIONALITY



Canada



United Kingdom



United States



Switzerland



Japan



Australia



New Zealand



Other

The Global Drug Reference Online (Global DRO) provides athletes and support personnel with information about the prohibited status of specific medications based on the current World Anti-Doping Agency (WADA) Prohibited List.

Global DRO does not contain information on, or that applies to, any dietary supplements.

Table 1. Herbal Medicines Prohibited In-competition

Country	Agency	Prohibited herbal medicine				
Korea	Korea Anti Doping Agency(KADA) ¹¹⁾	A. Herbal medicine containing prohibited substances	• Ephedrae Herba	麻黃		
			• Cannabis Semen	大麻仁		
			• Strychni Semen	馬錢子		
			• Strychni Ignatii Semen	呂宋果		
		B. Herbal medicine that may contain a small amount of prohibited substances	• Pinelliae Tuber	半夏 (S6)		
			• Rhizoma Pinelliae	法半夏		
			• Chelidonii Herba	白屈菜		
			• Liriopsis Tuber	麥門冬 (S3)		
			• Moschus	麝香 (S1)		
			• Rehmanniae Radix Recens	生地黃 (S5?)		
			• Cistanchis Herba	肉苁蓉		
			• Ponciri Fructus Immaturus	綠衣枳實		
			• Aurantii Fructus Immaturus	枳實		
			• Testudinis Plastrum	龜板 (S1,S9)		
		C. Drugs manufactured from raw materials that may contain prohibited substances	Hominis Placenta	紫河車		
China	China Anti-Doping Agency(CHINADA) ¹²⁾	Not specified	麻黃	馬錢子	罌粟殼	
					麝香	
	China Food & Drug Administration(CFDA) ¹³⁾	Ephedrae Herba, Strychni Semen, Papaveris Fructus Deseminatus, Moschus (Artificial musk)				
Japan	Japan Anti-Doping Agency(JADA) ¹⁴⁾	Not specified				
		Japan Sport Association(JSPO) ¹⁵⁾	Ephedrae Herba, Strychni Semen	麻黃	馬錢子	海狗腎
						麝香
	Tokyo Pharmaceutical Association ¹⁶⁾	Ephedrae Herba, Strychni Semen, Otariae Testis et Penis, Moschus				



S6 Stimulants

- **strychnine** (番木鱈鹼/馬錢子鹼/土的寧)

- **pseudoephedrine /ephedrine**



S8 Cannabinoids



Higenamine : S3 Beta-2 agonists

去甲烏藥鹼

Table 2. Herbal Medicines Prohibited at All Times

Country	Agency	Prohibited herbal medicine
Korea	Korea Anti Doping Agency(KADA) ¹¹⁾	Not specified
China	China Anti-Doping Agency(CHINADA) ¹²⁾	<ul style="list-style-type: none"> ▪ Aconiti Lateralis Preparata Radix 附子 ▪ Aconiti Tuber 附子 ▪ Linderae Radix 烏藥 ▪ Asia Radix 細辛 (Asari Radix) ▪ Nelumbinis semen 蓮子 ▪ Nelumbinis Plumula 蓮子芯 <p>(Do not prescribe 408 prescriptions containing this herbal medicine)</p>
Japan	Japan Anti-Doping Agency(JADA) ¹⁴⁾	<ul style="list-style-type: none"> ▪ Nelumbinis semen 蓮子 ▪ <i>Tinospora crispa</i> 波葉青牛膽 ▪ Aconiti Lateralis Preparata Radix 附子 ▪ Caryophylli Flos 丁香 ▪ Asia Radix 細辛 (Asari Radix) ▪ <i>Nandina domestica</i> 南天竹 ▪ Evodiae Fructus 吳茱萸 <p>(Do not prescribe 24 prescriptions containing this herbal medicine)</p>

Strict Liability

(嚴格責任原則)

One of the main principles of the Code

each athlete is strictly liable for the substances found in his or her bodily specimen, and that an anti-doping rule violation occurs whenever a prohibited substance (or its metabolites or markers) is found in bodily specimen, whether or not the athlete intentionally or unintentionally used a prohibited substance or was negligent or otherwise at fault.

Supplement Risks

Contain a banned substance

Claims such as "approved by WADA" or "safe for athletes"

Contaminated with a banned substance during the manufacturing process

Labels do not list all ingredients

Ingredients listed differently to how they appear on the Prohibited List

Fake products can be bought over the internet



保健食品

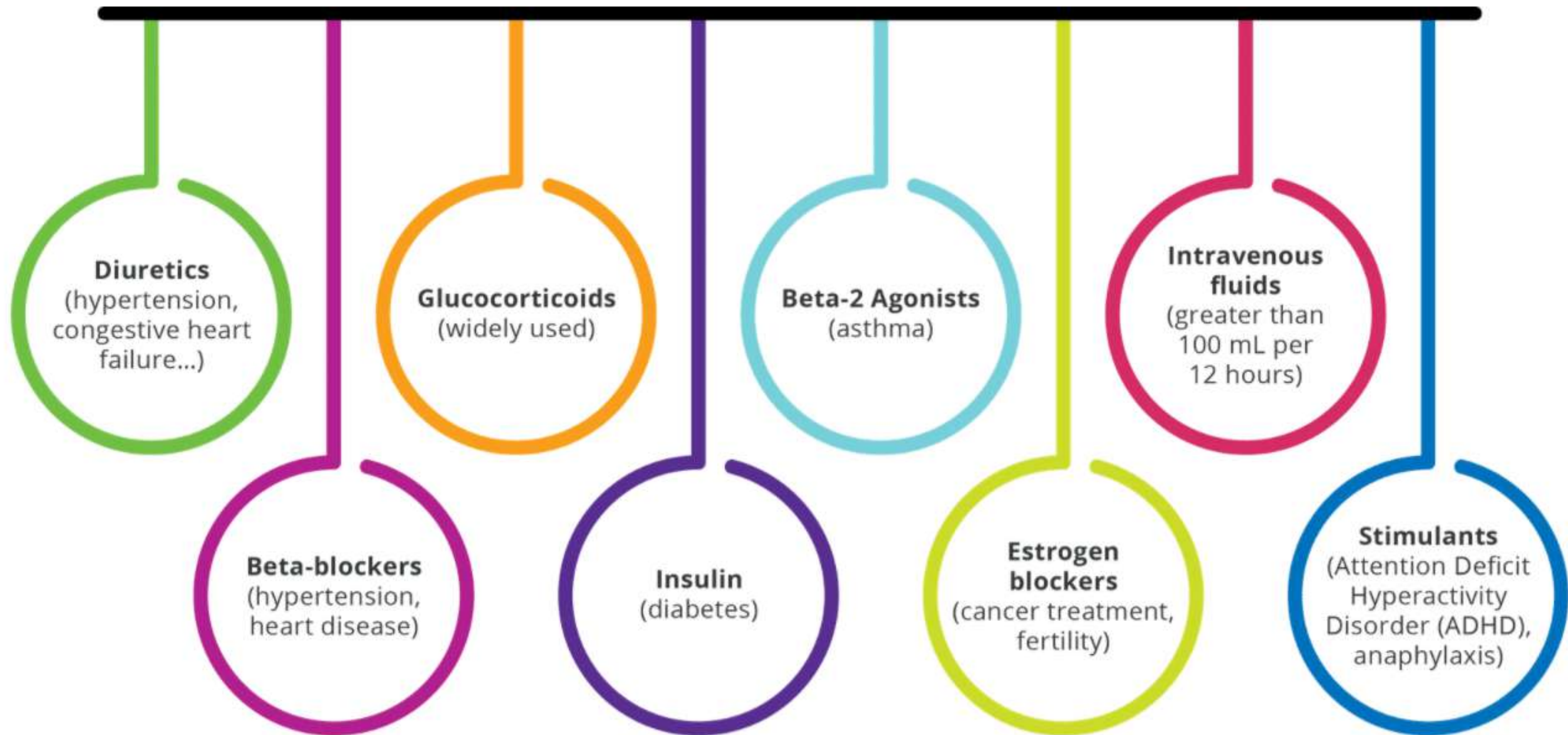


SPORT

Therapeutic Use Exemptions

-TUE-

(治療用途豁免)



TUE

(適用原則)

- (一) 運動員因急慢性疾病治療須使用該禁用物質或方法且無合理可行之替代治療者。
- (二) 該治療用禁用物質或方法不會增加運動表現者。
- (三) 該治療用禁用物質或方法，不得為先前違規使用禁用物質或方法所致者。

TUE

(適用原則)

基於實證
該疾病或臨床狀況必須使用禁
用物質或方法

不會增加運動表現

無合理可行之替代治療

不得為先前違規使用

- The Prohibited Substance or Method is needed to treat a diagnosed medical condition supported by relevant clinical evidence
- The Therapeutic Use of the Prohibited Substance or Method will not, on the balance of probabilities, produce any additional enhancement of performance beyond what might be anticipated by a return to the athlete's normal state of health following the treatment of the medical condition
- The Prohibited Substance or Method is an indicated treatment for the medical condition, and there is no reasonable permitted Therapeutic alternative
- The necessity of the use is not a consequence of a prior use of a banned substance

回溯性TUE

(適用原則)

緊急醫療或重症者

a. Emergency or urgent treatment of a medical condition was necessary.

特殊情況

b. Insufficient time, opportunity or other exceptional circumstances that prevented submission/ consideration of a TUE application prior to sample collection.

未能及時

c. Due to national level prioritization of certain sports, the athlete's NADO did not permit or require the athlete to apply for a prospective TUE.

提出申請者

d. If an ADO chooses to collect a sample from an athlete who is not an ILA or NLA, and that athlete is using a prohibited substance or prohibited method for therapeutic reasons, the ADO must permit the athlete to apply for a retroactive TUE.

屬賽內禁用物質

e. Out-of-competition use of a prohibited substance that is only prohibited in competition.

但選手於賽外施用，

存在賽內檢出風險者

Who Grants TUEs?

IFS

國際單項運動聯合會

(International Sports Federations)



羽毛球世界聯合會

世界羽聯世界錦標賽

NADOS

國家反禁藥組織

(National Anti-Doping Organizations)



財團法人中華運動禁藥防制基金會

全國運動會、全民運動會

全國大專校院運動會

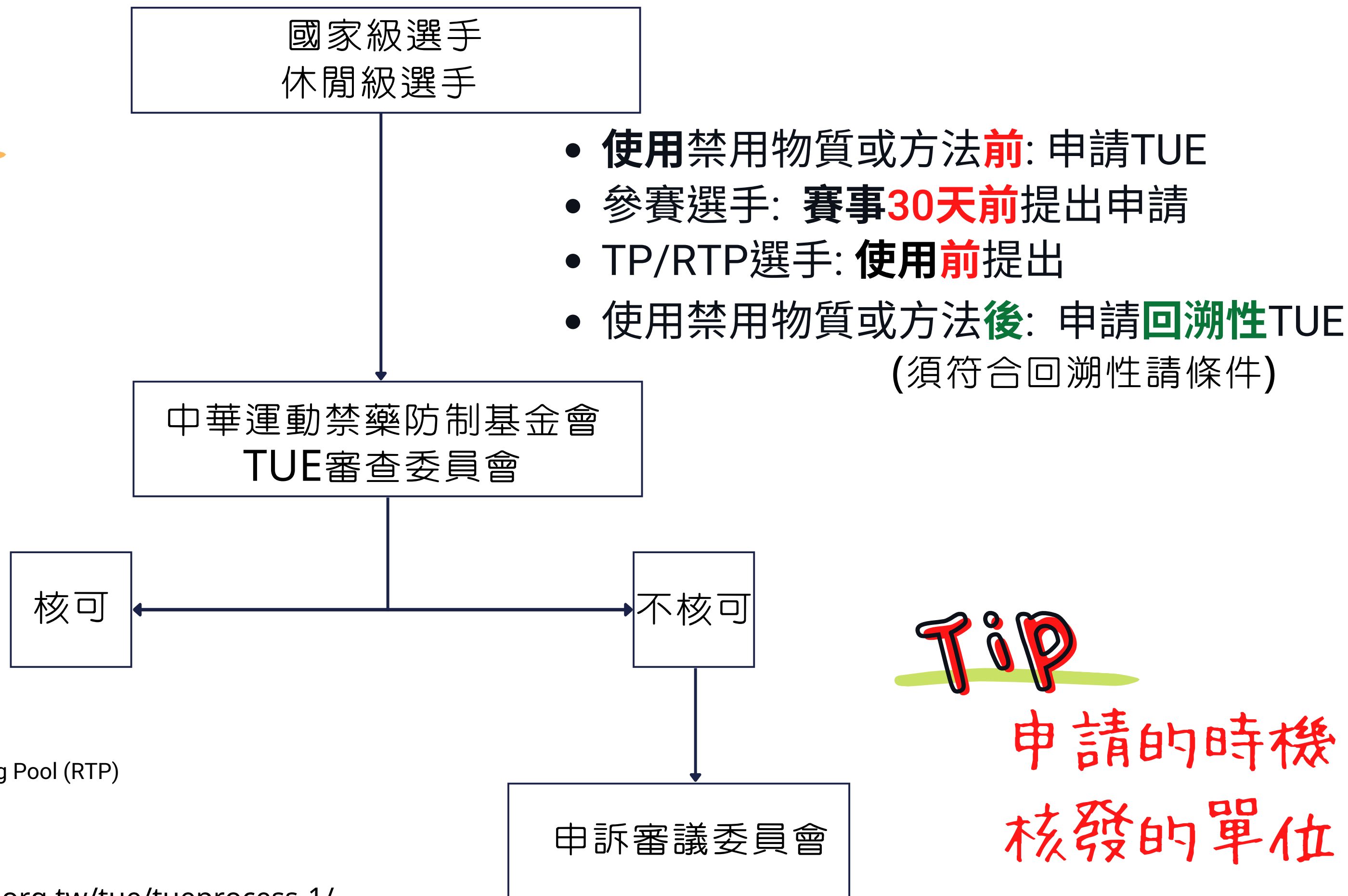
全國中等學校運動會

MEOS

重要賽事組織

(Major Event Organizations)

TUE 申請流程



藥檢登錄名冊: Registered Testing Pool (RTP)

藥檢名冊: Testing Pool (TP)

The Doping Control Process



Athlete Selection



Athlete Notification



Sample Collection



Chain of Custody

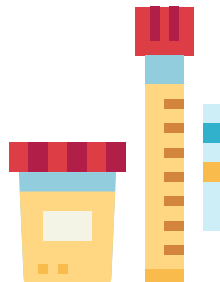


Laboratory Analysis



Results Management

Urine



+/-



BLOOD

retention times:
Indefinitely / 10 yrs